

PART OF THE S.W. 1/4, OF SEC. 28, T.7N., R.1W., S.L.B. & M.

# NORTH OGDEN BLOCK 25, PLAT A

TAXING UNIT: 10

IN NORTH OGDEN CITY

SCALE 1" = 50'

SEE PAGE 31

402'

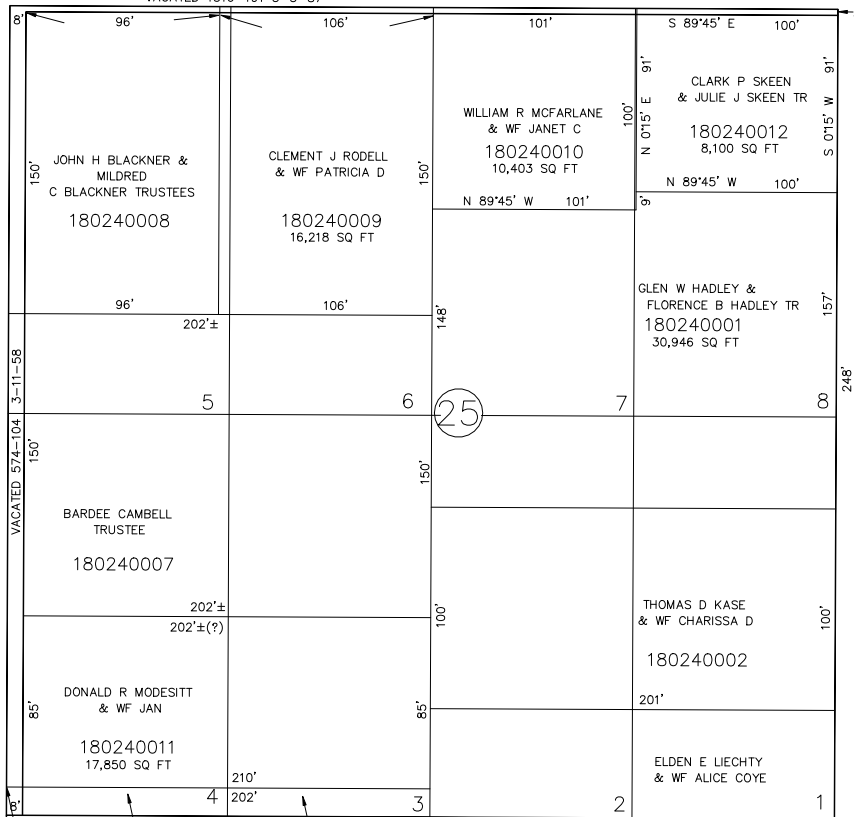
## 2750 NORTH STREET

S 89°45' E

VACATED 1516-191 5-5-87

399'  
VACATED 574-104 3-11-58  
550 EAST STREET

N 07°15' E



248'  
600 EAST STREET

N 07°15' E

399'

SEE PAGE 25

SEE PAGE 23

THE SHARON R DOVER LIVING TRUST

180240006  
16,800 SQ FT

## 2700 NORTH STREET

180240003

S 89°45' E  
VACATED 808-204 5-24-65

402'

SEE PAGE 17